



Sou'westers

2nd-7th November 2010

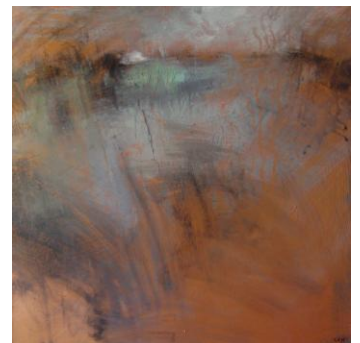
Private View 4th November 2010, 6pm-8.30pm

ELEVEN AND A HALF at the Colomb Art Gallery, Marylebone

ELEVEN AND A Half returns to the Colomb Art Gallery for a group exhibition featuring recent paintings by several artists from west Cornwall: Ben Catt, Neil Davies, Brenda King, John Piper, Michael Praed, Terry Whybrow, Ges Wilson and Vincent Wilson as well as ceramics by Lincoln Kirby Bell. This group represents some of Cornwall's finest artists whose work has been exhibited throughout the UK and abroad. They encompass a broad range of painting styles, from still-lives and faux-naïve compositions to landscapes of varying degrees of abstraction. All are heavily influenced by the 19th and 20th century Newlyn and St Ives art movements and by the moors, mines, cliffs and coves that characterise Penwith.

Ben Catt

Ben Catt was born in London in 1970. He studied sculpture in Newcastle before beginning a career working for a leading design company. Since moving to Cornwall several years ago Ben's work has been taken up by several local galleries and he has had a number of one-man shows in the region. Ben's paintings are heavily influenced by the landscapes of Penwith, evoking feelings and emotions conjured up by the weather conditions and the changing seasons. Ben works with oil paints in several layers, creating different forms and textures that lead to the sense of atmosphere in the paintings. As well as inside Cornwall, Ben's paintings have been shown at exhibitions in several galleries across the country. His uninhibited painting style has already won him many followers and the success of his recent one-man show in St Ives points to a growing level of interest in his work.



Neil Davies

Neil Davies spent his early years in a small fishing village in Scotland before moving south and studying at the Farnham School of Art in Surrey. Determined to pursue a career in painting Neil spent a lengthy and formative period in Florence before returning to the south of England where he taught painting and drawing at various higher education establishments. Neil spends a lot of time wandering the landscape of Penwith, making preparatory sketches for his paintings. His paintings, reminiscent of Turner in the capturing of light on the landscape, are completed back in his studio. There the walls are splattered through Neil's liberal application of paint, and the floors covered with saucers of oil paint mixed with bees' wax which Neil heats on a stove before applying to the canvas – the quick-drying nature of the mixture allowing the heavily textured style that characterises Neil's recent work.



Brenda King

Brenda King was born in Cumbria in 1934. She studied at Lancaster College of Art from 1950 to 1954 and at the Royal College of Art from 1954 to 1957 and exhibited regularly at the Royal Academy Summer Exhibition whilst living near London. In the 1960s and 70s she had regular shows in the South East before moving to Cornwall in 1975. She lives in Penzance with her husband, Jeremy, who is also a successful artist. Brenda's paintings are in the faux-naïve style that found many followers in the late twentieth century in West Cornwall. Brenda's paintings have been exhibited widely in recent years, across the West Country as well as internationally, as far afield as Tokyo. Although she paints less frequently her work has retained a strong following of collectors.



Lincoln Kirby Bell

Lincoln Kirby Bell was born in South Australia and travelled, studied and exhibited widely before settling into his current studio close to Newlyn Harbour. His hand-thrown and -painted ceramics are shown in a number of galleries in Cornwall and further afield. The elaborate designs, often featuring spots, spirals and circles draw from his experiences of archaeological digs in Central and South America. The exuberant colours make his work unforgettable and instantly recognisable. His work combines aesthetic considerations with functionality to produce individual and unique objects.

John Piper

John Piper was born in Salisbury in 1946 and moved to Cornwall while still at school. Strongly influenced by the countryside of West Cornwall, John is well known for his paintings of the moors, carns, headlands and cliffs that characterise this landscape. He applies paint in several layers, often with deeply etched lines allowing contrasting colours to show through. Looming skies or large expanses of moorland create a dramatic, often stark effect. His paintings have been shown across Europe and North America and are widely collected. John is a member of the Penwith Society of Artists and a former Chairman of the Newlyn Society of Artists.



Michael Praed

Michael Praed was born in Cornwall in 1941 and studied art locally, at the Penzance and Falmouth Schools of Art. His paintings of the Cornish coastline, ports and fishing boats have a distinctive personal style and are instantly recognisable. The strong, near vertical lines often that often pervade the work evoke those that are omnipresent in the granite cliffs and harbours of Penwith. Michael has held solo shows in London and across continental Europe. He is a member of the Penwith Society of Artists and a former Chairman of the Newlyn Society of Artists.



Terry Whybrow

Terry Whybrow was born in 1932 in St Pancras, London. He trained and worked as a furniture designer for many years before moving to Cornwall in 1980 and taking up painting full-time. Today he lives and paintings right in the heart of St Ives with his wife, the art historian Marion Whybrow. Upon moving to Cornwall Terry was heavily influenced by the abstract movement that had been based in St Ives in the mid-twentieth century, in particular Ben Nicholson and Sir Terry Frost. Reversing the trend of many artists, the shapes and forms of his early work gradually developed into the fruit and bowls of the still-lives for which he has become well-known, whilst always retaining a strong sense of composition and structure from his design background. His works have a serene and tranquil nature that belies Terry's meticulous approach to their painting and framing.



Ges Wilson

Ges Wilson studied at Loughborough and Exeter Colleges of Art before moving to Cornwall in the mid-1980s to teach painting at a Penzance school. Ges paints semi-abstract landscapes, inspired by the coastal scenes of Penwith. However, it is for her figurative works that she is perhaps best known. These arise from life drawings, simplified so as to describe an experience or memory rather than a detailed observation of the subject matter. Ges has exhibited widely in the West Country and further afield. She has held 'Artist in Residence' positions in studios in the UK and France. Ges is a member of the St Ives Society of Artists and a Professional Freelance Artist for Tate St Ives.

Vincent Wilson

Vincent Wilson was born in Mold, north Wales, and studied painting and printmaking at Chester and Liverpool Schools of Art. His work was first exhibited in 1954. Vincent's work captures the atmosphere and openness of the Cornish landscape, particularly the moorland. His paintings consist of layers of torn fragments of paper, arranged and re-arranged until the composition is complete. Vincent has exhibited his work widely, including at the Royal Academy. He is a member of the Penwith Society of Artists, the Royal Cambrian Academy and was elected to the Devon Guild of Craftsmen in 1995.



ELEVEN AND A HALF is an art dealership based in London and specialising in artists from West Cornwall:

ELEVEN AND A HALF
Fournier Street
London
E1 6QE
02073776144
www.elevenandahalf.com